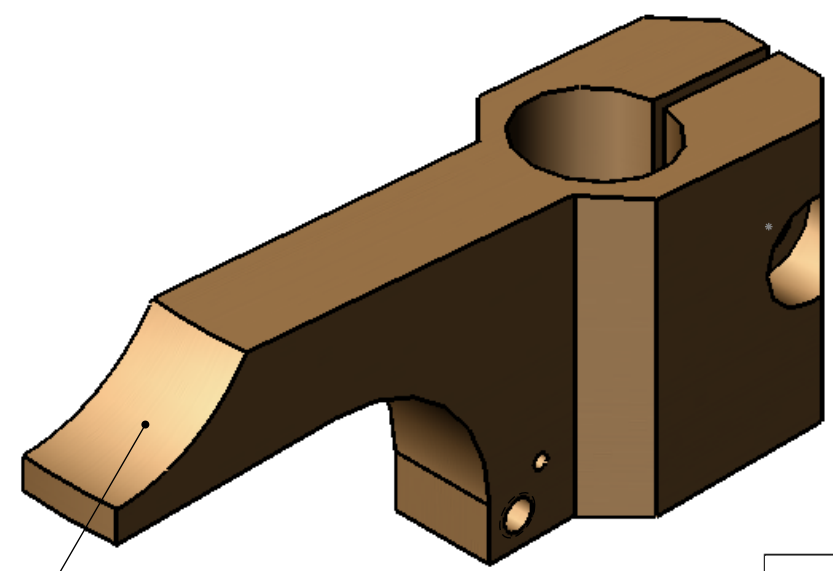
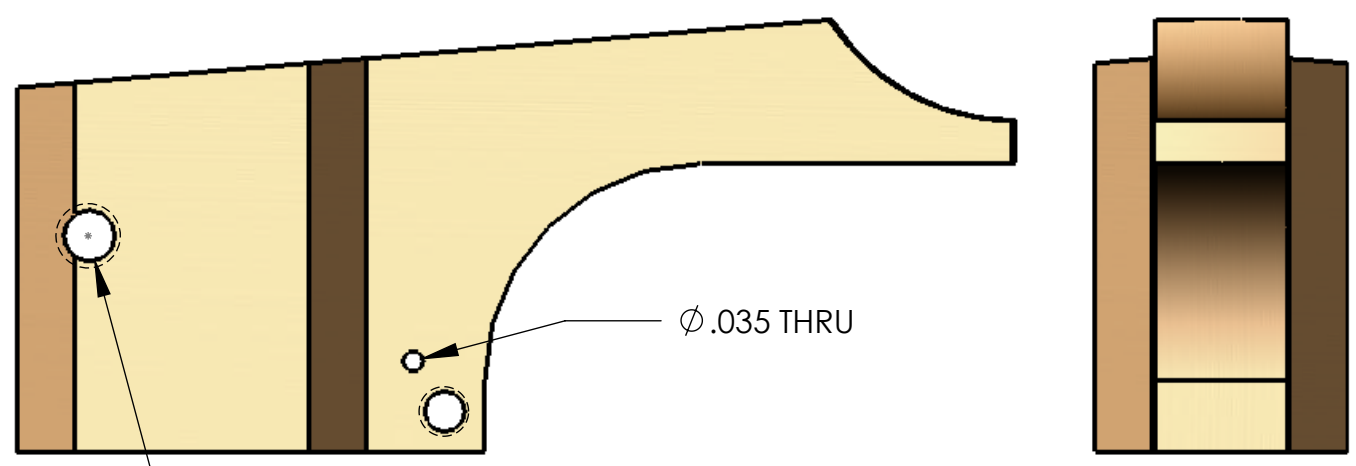
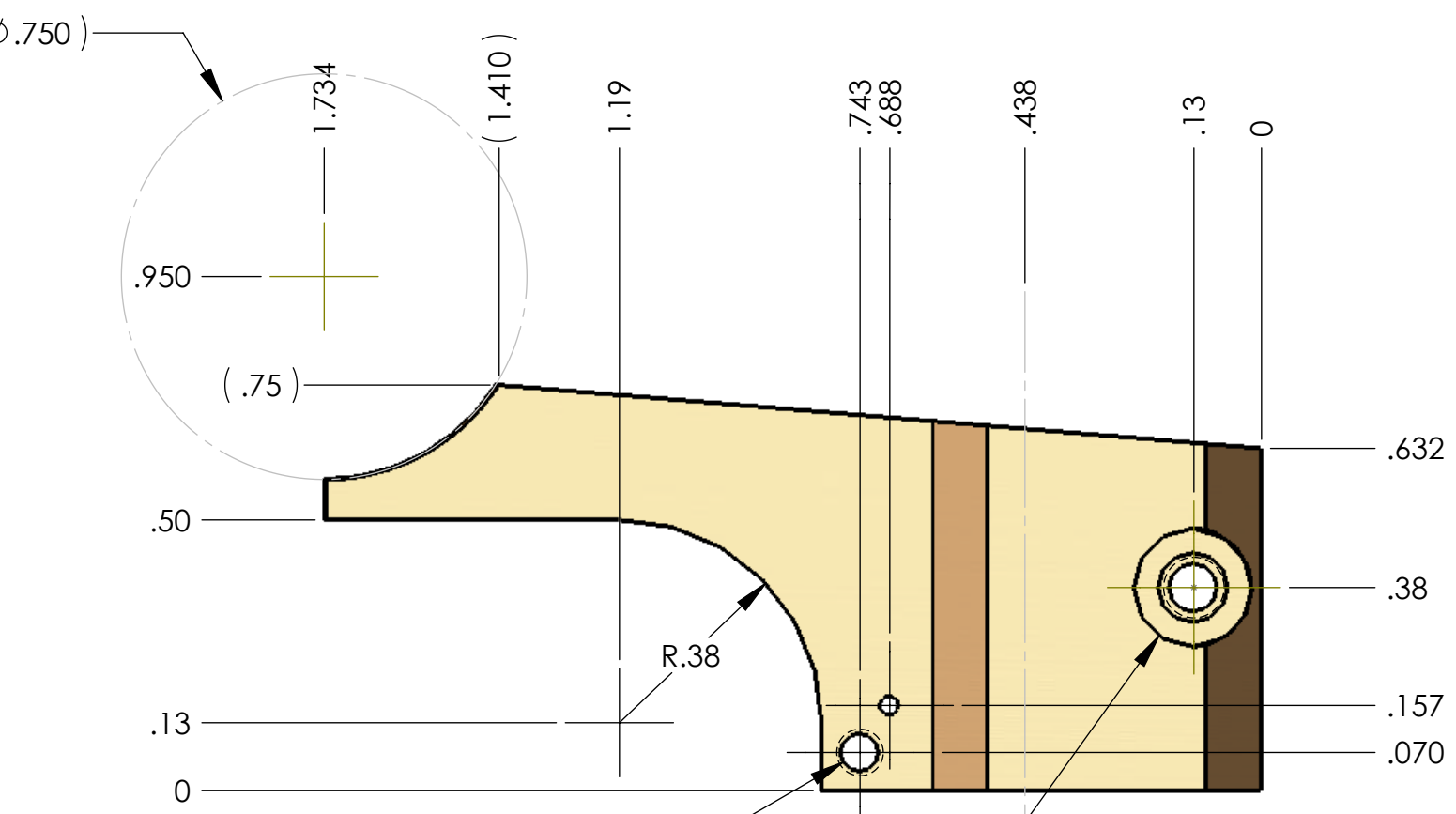
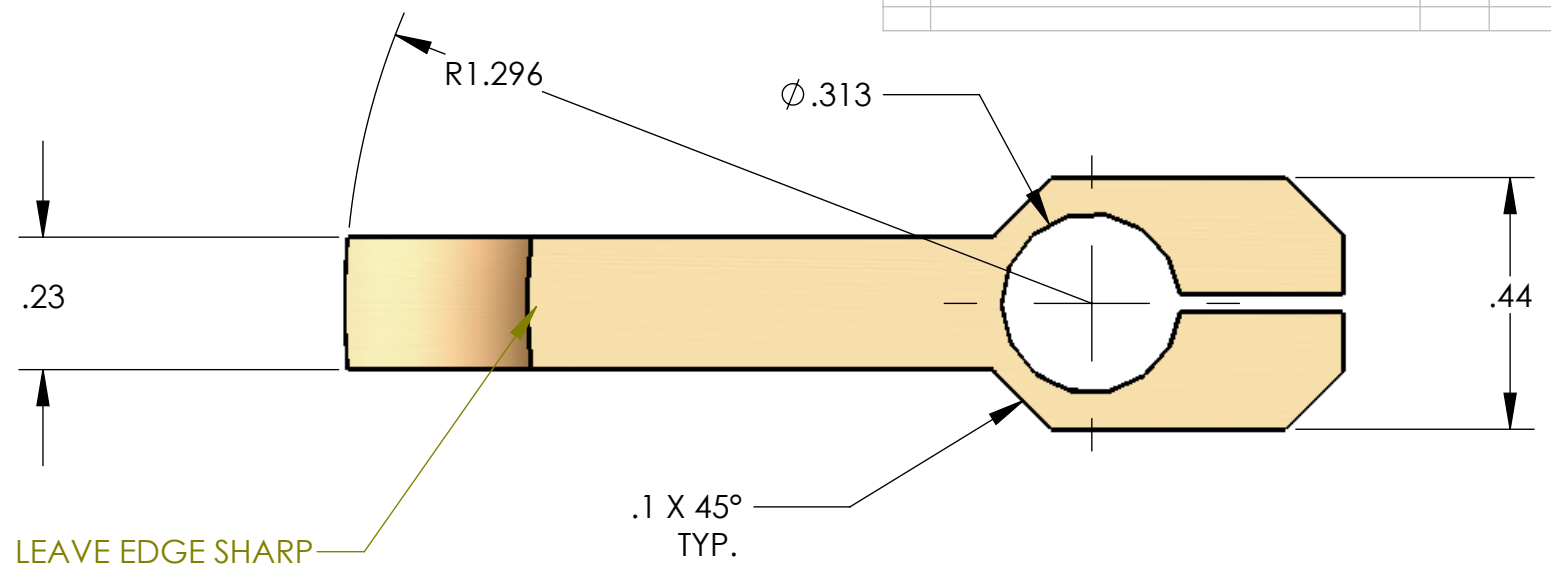
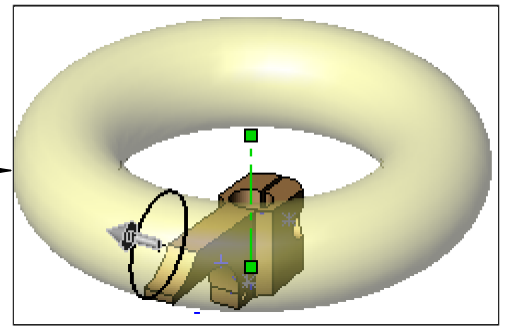


REVISIONS			
REV.	DESCRIPTION	DATE	APPROVED



THIS SURFACE IS MADE BY CUTTING CONCENTRIC TO THE CENTER OF THE ROD AS SHOWN



Ø .070 THRU ALL  
2-56 UNC THRU ALL

Ø .129  $\nabla$  .204  
Ø .219  $\nabla$  .112

THIS PART IS NOT ORIGINAL TO ANY SYNCHRONOME CLOCK  
IT IS REDESIGNED TO BE MADE FROM FLAT STOCK AND  
FOR A DIFFERENT RETENTION OF THE GATHERING ARM  
MODELED FROM 2CP MOVEMENT

UNLESS OTHERWISE SPECIFIED DIMENSIONS ARE IN INCHES  
TOLERANCES ARE:  
[.X]= $\pm$ .02  
[.XX]= $\pm$ .01  
[.XXX]= $\pm$ .004  
ORDANATE [.XXX]= $\pm$ .002 [XX]  $\pm$ .01  
ANGLE TOLERANCE:  $\pm$ .5° BREAK EDGES 0.01  
DO NOT SCALE DRAWING INTERIOR CORNER RADII .02  
MATERIAL  
**BRASS**  
FINISH  
**NONE**  
SW PART NAME  
78 Brass Impulse Pallet Machined.SLDDRW

APPROVALS	DATE
DRAWN <b>FAD</b>	5-20-07
CHECKED	

HONOR GOD  
SERVE PEOPLE  
DEVELOP EXCELLENCE  
GROW PROFITABLE  
FOLLOWING BIBLICAL  
PRINCIPLES

<b>LBP INCORPORATED</b>	
CLOCK	
IMPULSE PALLET FROM STOCK	
DWG. NO.	78-M
SIZE B	SHEET 1 OF 1 REV. C